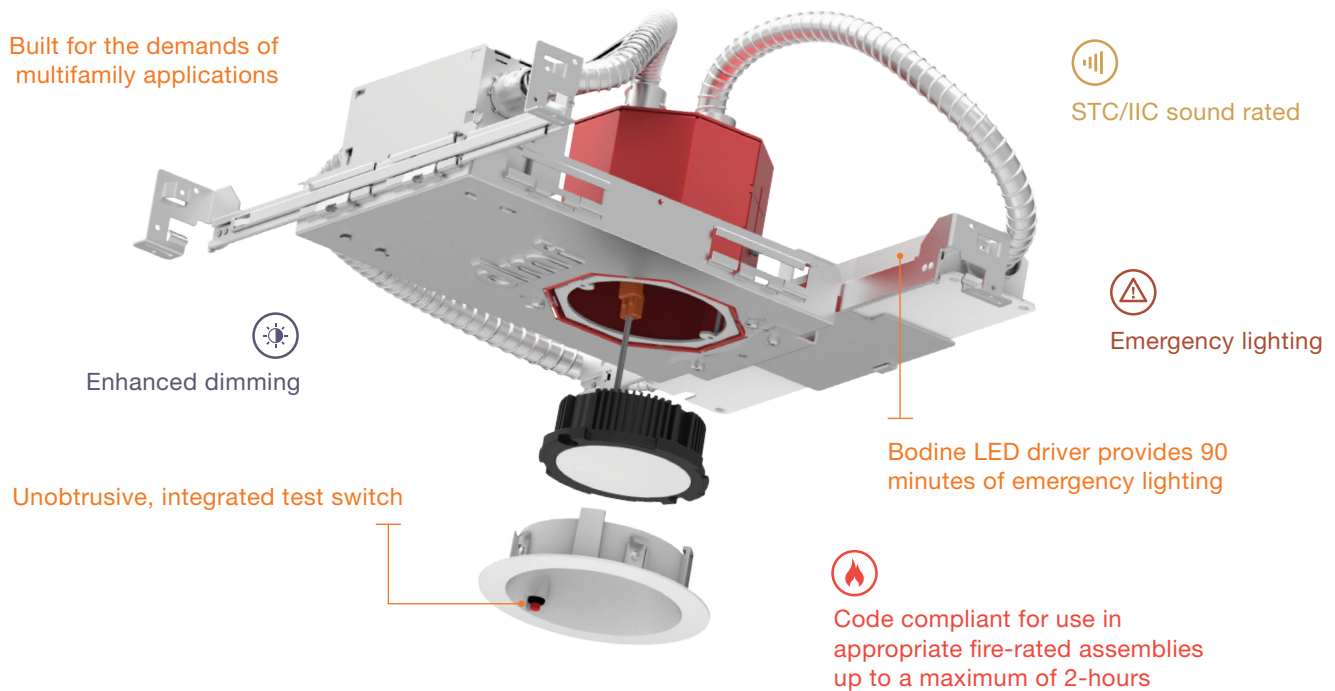


OneFrame DRDHNJD

Recessed LED Downlight with Emergency Lighting



Specs at a Glance

Application	New Construction, Deep Junction Box
Light Module	DRD2, DRD2X, DRD4
Lumen Output (Power)	DRD2: 750 lm (11.8W), 1000 lm (14.7W); DRD2X: 600 lm (10.0W), 750 lm (12.5W); DRD4: 650 lm (9.7W), 800 lm (12.0W)
Color Quality	90+ CRI, 2-step SDCM
CCT Options	2700K, 3000K, 3500K, 4000K
Lifetime (L70)	50,000 hrs
Input Voltage	120/277V
Dimming	Dimming down to less than 1% for 0-10V or Lutron® Hi-Lume® 1%
Emergency Lighting	Emergency LED Driver for lighting up to 90 minutes in event of power failure
Trim Shape	Round, Square
Trim Style	Standard, Hyperbolic, Pinhole, Beveled Pinhole, Wall Wash, Standard w/ Test Switch
Trim Finish	White, Black, Silver (silver reflector, white flange), Custom
Listings	cULus Listed, ENERGY STAR® qualified, California Title 24 2016 JA8 compliant, UL Listed for Wet Location, DRDHNJD metallic outlet box certified UL514A, STC/IIC Sound Rated, IC rated, ASTM E283 certified Air Tight
Warranty	5 years

Product Selection Guide

FRAME-IN KIT (Product Code Example: **DRDH** + **N** + **JD** + **70** = **DRDHNJD70EM**)

PRODUCT CODE		APPLICATION		APERTURE		DRIVER	
<input type="text"/>		<input type="text"/>		<input type="text"/>		<input type="text"/>	
DRDH	Housing	N	New Construction	JD	Deep Junction Box	70EM	0-10V, EM Driver, 750 lm
						10OEM	0-10V, EM Driver, 1000 lm
						7CEM	Lutron LDE1, EM Driver, 750 lm
						10CEM	Lutron LDE1, EM Driver, 1000 lm
						7WEM	Lutron L3DA3W, EM Driver, 750 lm
						10WEM	Lutron L3DA3W, EM Driver, 1000 lm

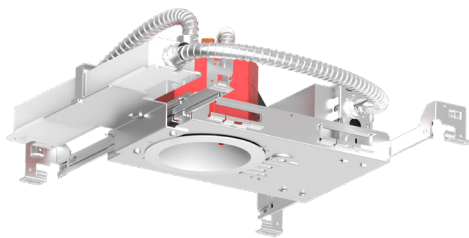
LIGHT ENGINE (Product Code Example: **DRD2M** + **7** + **9** + **27** + **A** = **DRD2M7927A**)

PRODUCT CODE		LUMENS		CRI		CCT		DRIVER	
<input type="text"/>		<input type="text"/>		<input type="text"/>		<input type="text"/>		<input type="text"/>	
DRD2M	Module	7	750 lm	9	93+ CRI	27	2700K	A	Alternate Dimming
		10	1000 lm			30	3000K		
						35	3500K		
						40	4000K		

TRIM (Product Code Example: **DRD2T** + **R** + **JD** + **S** + **WH** + **EM** = **DRD2TRJDSWHEM**)

PRODUCT CODE		SHAPE		APERTURE		STYLE		FINISH		OPTION	
<input type="text"/>		<input type="text"/>		<input type="text"/>		<input type="text"/>		<input type="text"/>		<input type="text"/>	
DRD2T	Trim	R	Round	JD	Deep Junction Box	S	Smooth	WH	White	EM	Test Switch

Dimensions



DRDHNJD
Deep Junction Box

